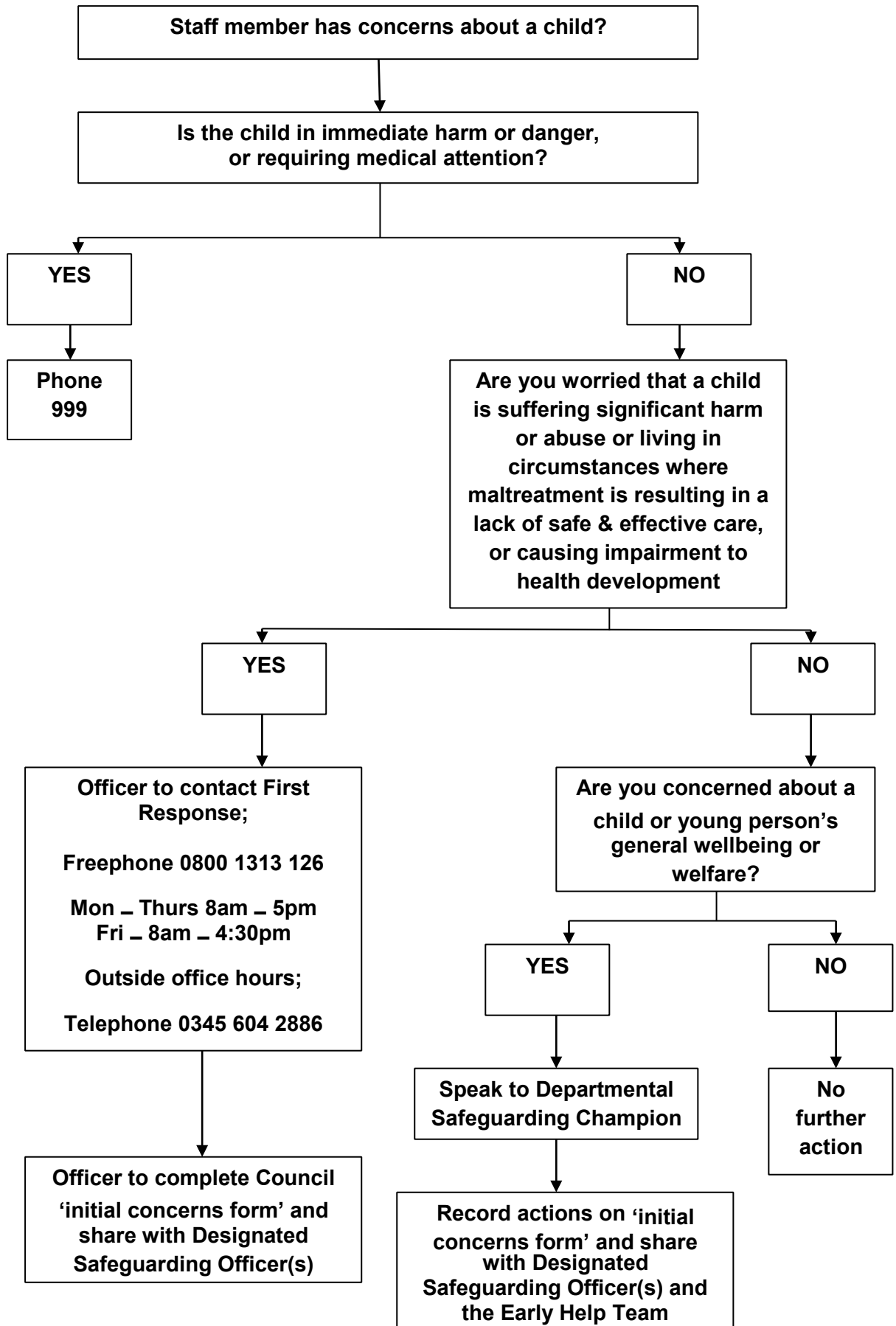


APPENDIX A (i)



APPENDIX A (ii)

* An adult at risk of abuse or neglect has needs for care and support (whether or not the local authority is meeting any of these needs) and;
 - is experiencing, or at risk of abuse or neglect; and
 - as a result of those care and support needs is unable to protect themselves from either the risk of, or the experience of abuse or neglect, significant harm or exploitation

- Types of abuse:
- Physical - Sexual
 - Financial - Discriminatory
 - Neglect - Selfneglect
 - Organisational abuse
 - Domestic abuse
 - Modern slavery

